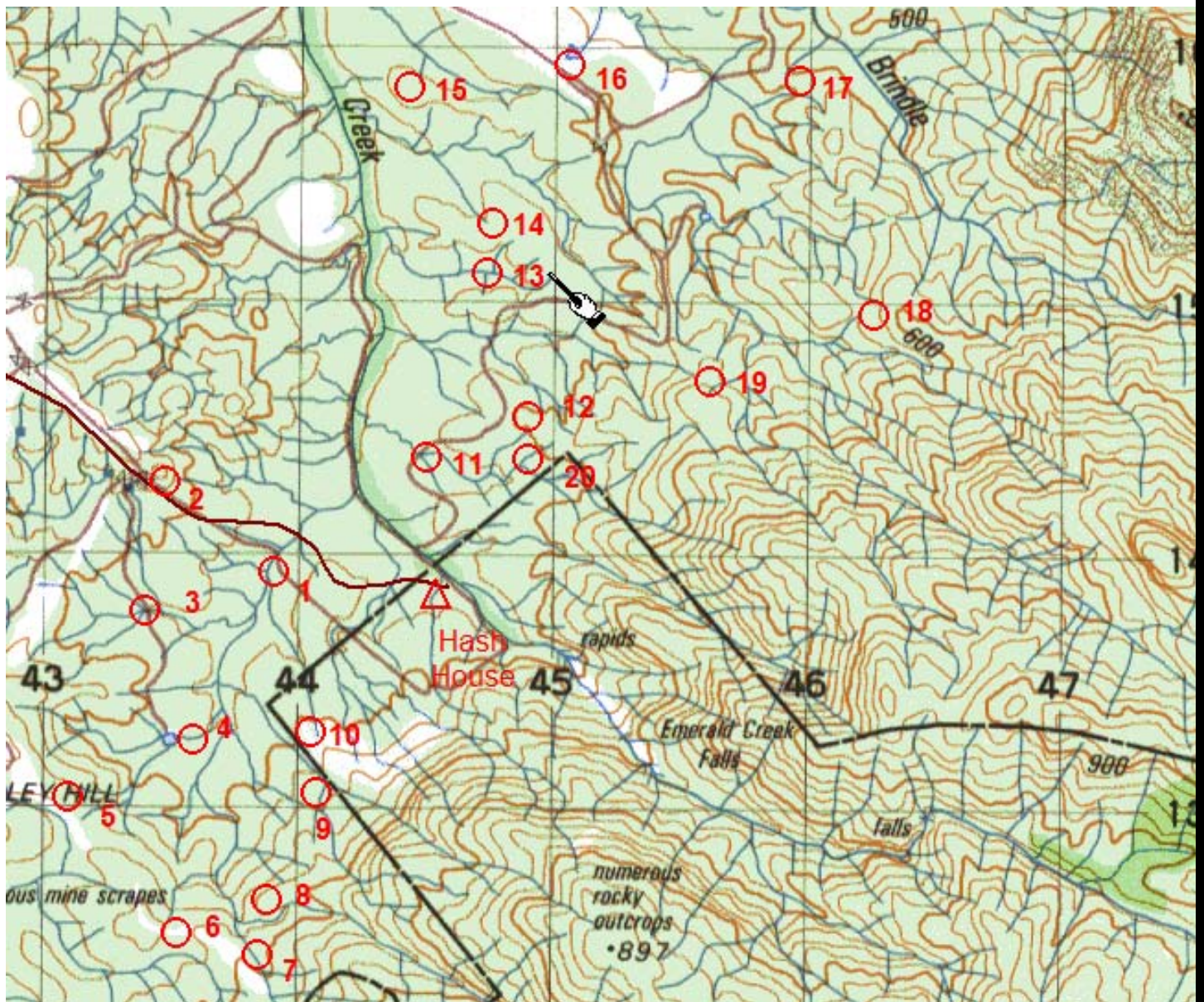


Emerald Creek Nav Training Map



This course is 18.2 KM's for all 20 controls. Suggest first timers complete the course in numerical order. Alternative courses are; every second control [1,3,5,7 etc], in reverse, long distance [8,4,2,14, 18, 20].

The course is undulating, not steep. Watch for swift flowing water in the wet season. Please report any missing controls to rogainingnq@adventureracing.com.au. Controls are a 20cm aluminium disc:

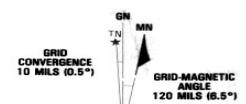


LEGEND



Contour Interval: 20m.

Scale 1:25 000
(One grid = 1km)



TRUE NORTH, GRID NORTH AND MAGNETIC NORTH ARE SHOWN DIAGRAMMATICALLY FOR THE CENTRE OF THIS MAP. MAGNETIC NORTH IS CORRECT FOR 1980 AND MOVES EASTERLY BY 2 MILS (0.1°) IN ABOUT FOUR YEARS. TO CONVERT A MAGNETIC BEARING TO A GRID BEARING ADD GRID-MAGNETIC ANGLE.